

# SitePro® Central Control Systems

SitePro is the most popular central control system in the golf course industry. Choose from 4 different field hardware platforms; Network VP and Network LTC Plus for field access to program information, Network GDC decoders for easy field expansion or OSMAC for quick retro fit or wireless upgrade.

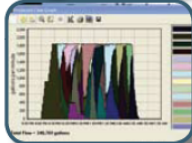


### Features & Benefits



#### REMOTE ACCESS TO YOUR SYSTEM

See an area that needs adjustment on the course; make the change directly at the satellite or on PRISM. Need to check what's running now, use your mobile phone from anywhere. Want to confirm your pump station is running at full capacity during the night; check in from your home PC. With *NSN Connect*, remote access is now available any time, anywhere.



#### MAXIMIZE YOUR EFFICIENCY AND SAVE PRECIOUS RESOURCES

Manage your water time window and keep your pump station at full capacity. Select the flow management method that best meets your requirements. See where your water is going and when. Save time, energy and water.



#### INTEGRATE SITEPRO WITH YOUR PUMP STATION

The ability to connect to your pump station monitoring software is a standard feature in SitePro. Choose how you want the interaction to occur and what conditions you want SitePro to automatically respond to.



#### RUN YOUR SYSTEM DIRECTLY FROM T.MAP

A picture is truly worth a thousand words with T.Map—full manual operations and system feedback. View, edit and create irrigation programs. Compatible with GPS, CAD and aerial photography. Communicate with your staff and your management team with work orders.



#### TORO NSN SUPPORT IS AVAILABLE 24/7/365

Need to ask someone a programming question or need hardware support, 1-800-ASK-TORO. Web based *Training in Ten* sessions available anytime. Get help with any SitePro question from licensed irrigators. One year, three year and five year support plans available.

### Additional Features

- Multiple communication modes:
  - Wireless digital paging
  - 2-way wireline
  - 2-way wireless
  - Hybrid (combination of wireline and wireless) for Network LTC Plus and Network VP
- Available Alarm/Response capabilities:
  - Reads sensors from the field
  - Logs status of sensors based on multiple "if/then" logic to generate alarms
- Automated adjustment factors allow scheduling refinement from 0-999% by station, satellite, program, group and global
- Selectable program upload information
- Microsoft Windows XP Professional™ compatible
- User-definable names vs. system defaults
- Toro Repeat & Soak assigned by program or station:
  - Up to 3 repeats per program
  - Up to 24 starts per program
- Advanced multi-manual operations for overseeding, hot spots or fertilizer wash-in for all hardware platforms
- Extensive reporting capabilities
- Multi-lingual display (English, Spanish, French, German, Italian, Japanese and Chinese)
- Pump station integration
  - Connect to multiple pump stations
  - Maximize system efficiency and save energy

### SitePro 3.0 Network VP Support For

- Station base flow management
- Station current sensing
- Download times reduced by up to 80%
- Individual station cancel

### Optional Features

- T.Weather WeatherLogic software module which allows:
  - Calculates ET-driven runtimes
  - User-defined alarm thresholds
  - Interactive, automatic response to the central
- NWHH hand-held radio software for on-course irrigation control
- PRISM graphical on-course irrigation control

### Warranty

- 1 Year or 5 Year
- Renewable warranty with NSN support agreement

### Specifying Information—SitePro

SP-0-X-X-0-X-NB				
Type	Computer Hardware	Service	Field Hardware	Optional
SP	0X	X	0X	NB
SP—SitePro	1—Standard Computer 4—Premium Computer	1—1-year NSN 5—5-years NSN	1—OSMAC/E-Series OSMAC 3—Network LTC Plus 7—Network VP 8—Network GDC	NB—Narrow-band Digital Wireless Paging

Example: When specifying a SitePro Central standard computer with one year of NSN and Network LTC Plus field hardware, you would specify: SP-01-1-03

### Specifying Information—SitePro Synergy Series

Model Number	Description
SP-00-1-11-NB	SitePro Synergy Series for OSMAC
SP-00-1-13	SitePro Synergy Series for Network LTC Plus
SP-00-1-18	SitePro Synergy Series for Network GDC

# Golf Decoder Control System (GDC)

The Toro GDC uses innovative technology to provide an irrigation solution that is safe, reliable, and energy efficient. The GDC system uses aerospace technology to allow for longer wire runs, smaller gauge wire sizes, and more simultaneous valves in operation.



SitePro Central

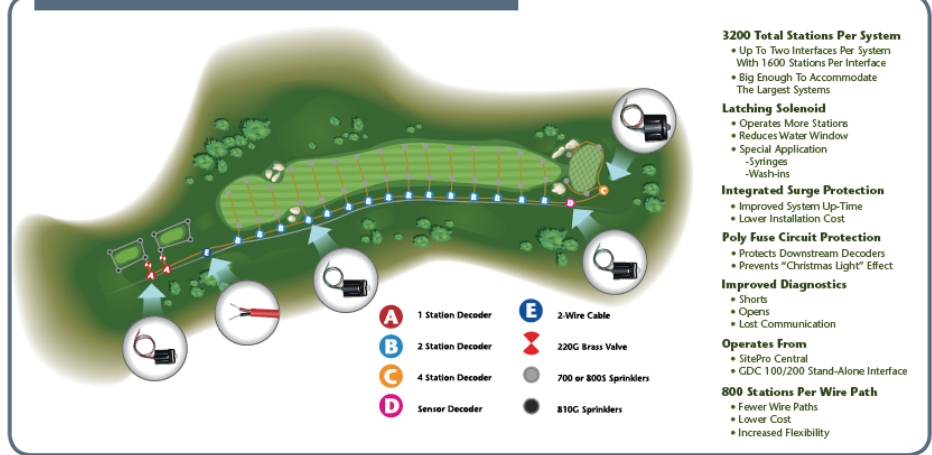


Stand Alone GDC Central



1, 2 and 4-station Decoders

## Typical GDC Hole Layout



- 3200 Total Stations Per System**
  - Up To Two Interfaces Per System With 1600 Stations Per Interface
  - Big Enough To Accommodate The Largest Systems
- Latching Solenoid**
  - Operates More Stations
  - Reduces Water Window
  - Special Application
    - Sprinkles
    - Wash-ins
- Integrated Surge Protection**
  - Improved System Up-Time
  - Lower Installation Cost
- Poly Fuse Circuit Protection**
  - Protects Downstream Decoders
  - Prevents "Christmas Light" Effect
- Improved Diagnostics**
  - Shorts
  - Opens
  - Lost Communication
- Operates From**
  - SitePro Central
  - GDC 100/200 Stand-Alone Interface
- 800 Stations Per Wire Path**
  - Fewer Wire Paths
  - Lower Cost
  - Increased Flexibility

### Additional Specifications

- Maximum number of wire paths:
  - 8 per gateway
- Maximum stations per gateway:
  - 200 on stand-alone
  - 1600 on SitePro Central
- Maximum stations per system:
  - 200 on stand-alone
  - 3200 on SitePro Central
- Simultaneous stations per output:
  - 20 on stand-alone
  - 100 on SitePro Central
- Maximum distance from central to decoder (using 14 gauge wire): 2.6 miles
- Maximum distance from decoder to sprinkler (using 14 gauge wire): 400 ft.
- Solenoids per output: 2 DCLS-P
- Stations per decoder: 1, 2 or 4
- Operating temperature: 32°F to 140°F (0°C to 60°C)
- Storage temperature: -22°F to 212°F (-30°C to 100°C)

### Additional Features

- SitePro Central
  - Mapping capabilities via T.Map®
  - Remote hand-held operation
  - Weather station integration
  - Pump station integration
- Enhanced diagnostics
  - Communication
  - Electrical shorts/opens
  - Solenoid check
- No holding power required to operate stations
- Rain and pressure sensors
- Decoder Identification is a unique 6-character address
- Non-corrosive lockable wall mount cabinet, indoor/outdoor installation

### Electrical Specifications

- Input Power:
  - 100 V ac, 50/60 Hz
  - 120 V ac, 50/60 Hz
  - 220-240 V ac, 50/60 Hz
- Gateway output voltage: 38 V ac max
- Gateway output power: 98 VA max
- Decoder wiring: 14 gauge

### Warranty

- 1 Year

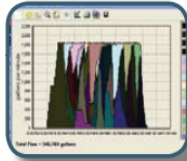
Product	Description	Pkg	Each
<b>SITEPRO CENTRAL COMPUTER - Includes Gateway Interface</b>			
SP-00-1-18	Synergy, Standard Computer, 1-year NSN	1	
SP-01-1-08	Standard Computer, 1-year NSN	1	
SP-04-1-08	Premium Computer, 1-year NSN	1	
SP-01-5-08	Standard Computer, 5-years NSN	1	
SP-04-5-08	Premium Computer, 5-years NSN	1	
<b>STAND ALONE CENTRAL</b>			
DEC-SA-200	Gateway, Stand-alone Central, 200 Station max	1	
<b>DECODERS - ISP - Integrated Surge Protection</b>			
DEC-ISP-1	2-wire Decoder, 1 Station, DC Operation	1	
DEC-ISP-2	2-wire Decoder, 2 Station, DC Operation	1	
DEC-ISP-4	2-wire Decoder, 4 Station, DC Operation	1	
<b>OPTIONS</b>			
DEC-PC-1600	Additional Gateway, PC Controlled, 1600 Station	1	
DEC-SG-LINE	Decoder Line Surge Protector	1	

## Water Management Highlight

With the ability to operate up to 400 stations simultaneously, GDC and SitePro are one powerful water management system. ET based runtimes and station-based flow management keep the system running at optimum efficiency, while extensive handheld radio controls allow you to effectively manage your watering while on the course.

# Network VP® Control System

The Network VP Satellite combines modular flexibility, ease of use and increased control in a single controller. Available from 16 to 64 stations in eight-station increments. Optional station switches and surge protection provide simple operation and added security.



### Features & Benefits

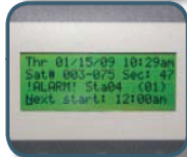
#### STATION BASED FLOW MANAGEMENT

Reduces nighttime water window and optimizes pump capacity. Central irrigation programs (greens, tees, etc.) are available from the satellite faceplate for manual watering and field adjustments.



#### NEW 3.0 VERSION REDUCES DOWNLOAD TIME

Variable length (VL) communication reduces download time by up to 80%. Communicate all program information to field controllers in minutes. Have confidence that the programs will run even if the central computer is offline.



#### CURRENT SENSING

Monitors each station output for proper amperage draw with user defined thresholds. Under and over current alarm notification at the satellite and in SitePro®. Protects against electrical shorts, wire cuts, etc.



#### INTUITIVE USER INTERFACE

With backlit display for better low-light viewing. Station range entry makes establishing irrigation routines easier. DVD type controls for Start, Pause/Resume and Stop.

### Electrical Specifications

#### Input Power:

- 108 V ac to 132 V ac, 60 Hz
  - 0.20 amps (no load) 115 V ac
  - 1.20 amps (max load) 115 V ac
- 216 V ac to 264 V ac, 50 Hz
  - 0.10 amps (no load) 230 V ac
  - 0.60 amps (max load) 230 V ac

#### Output Power:

- 24 V ac
  - 3.0 amps (max total load)
- UL Listed

### Additional Specifications

- Operating temperature: -10°C to 60°C (15°F to 140°F)
- Storage temperature: -30°C to 65°C (-22°F to 149°F)
- Humidity: 0% to 95% RH (non-condensing)

### Dimensions

- Plastic Cabinet: 17" W x 40" H x 16" D (41 cm W x 99cm H x 41 cm D)
- Metal Cabinet: 13" W x 36" H x 13" D (33cm W x 91cm H x 33cm D)

### Additional Features

- Optional output switches and surge protection
- Multi-Manual, Program Start and Syringe manual operations
- Group Multi-Manual operation
- Sturdy plastic or painted stainless steel pedestals
- Operates as a stand-alone controller, or under the management of a central computer
  - Supports wireline or radio communications
  - Supports hybrid communication (wireline and radio) for increased flexibility and cost effectiveness.
- 64 Irrigation programs: Independent stand-alone and central operation
- Basic, Advanced and Grow-in programs
- Pause, Resume and Stop functions
- Supports run times from 1 second to 23 hours, 59 minutes, 59 seconds
- Percent adjust from 1% to 900% (Station, Program, Satellite)
- Each output can be defined as an Irrigation station or general application switch.
- Non-volatile memory retains program information and satellite settings during power-off conditions. Battery back-up retains the satellite date and time

### Warranty

- 1 Year

Product	Description	Pkg	Each
---------	-------------	-----	------

#### SITEPRO FOR NETWORK VP - Field Interface sold separate (see below)

SP-01-1-07	Standard Computer, 1-year NSN for Network VP	1	
SP-04-1-07	Premium Computer, 1-year NSN for Network VP	1	

#### 5 YEAR WARRANTY - SITEPRO FOR NETWORK VP

##### (Field Interface Sold Separate - Includes Remote Training)

SP-01-5-07	Standard Computer, 5-years NSN for Network V	1	
SP-04-5-07	Premium Computer, 5-years NSN for Network V	1	

#### FIELD INTERFACE UNITS

FIU-2010	Field Interface Unit w/1 Wireline	1	
FIU-2020	Field Interface Unit w/2 Wirelines	1	
FIU-2011R	Field Interface Unit w/1 Wireline & 1 Radio Line (Radio included)	1	

#### BOARD EXCHANGE REPLACEMENT BOARDS (6 month warranty)

R102-3497	Timing Mechanism	1	
R102-2784	Distribution Module	1	
R102-3015	Pump Module	1	
R-102-2549	8-Output Module	1	
R102-0106	Universal Modem - New Style (replaces 89-751E)	1	
R102-0104	Standard Modem	1	
R89-8589	Surge Pump Common Communication	1	
R102-3125	Radio Adapter Board	1	
R363-4638	Maxon Radio - Replacement	1	

**BOARD EXCHANGE PRICES:** Purchase prices for exchange of old board for National Flat Rate pricing and/or Purchase prices for NO Exchange. (20% more)

Product	Description	Pkg	Each
---------	-------------	-----	------

#### NETWORK VP CONTROLLERS - No Modem or Radio

201-16P6A4	16-station Pedestal, Electric Gold Surge	1	
201-24P6A4	24-station Pedestal, Electric Gold Surge	1	
201-32P6A4	32-station Pedestal, Electric Gold Surge	1	
201-40P6A4	40-station Pedestal, Electric Gold Surge	1	
201-48P6A4	48-station Pedestal, Electric Gold Surge	1	
201-56P6A4	56-station Pedestal, Electric Gold Surge	1	
201-64P6A4	64-station Pedestal, Electric Gold Surge	1	

#### NETWORK VP CONTROLLERS - with Modem

201-16P6M4	16-station Pedestal, Electric Gold Surge	1	
201-24P6M4	24-station Pedestal, Electric Gold Surge	1	
201-32P6M4	32-station Pedestal, Electric Gold Surge	1	
201-40P6M4	40-station Pedestal, Electric Gold Surge	1	
201-48P6M4	48-station Pedestal, Electric Gold Surge	1	
201-56P6M4	56-station Pedestal, Electric Gold Surge	1	
201-64P6M4	64-station Pedestal, Electric Gold Surge	1	

#### NETWORK VP CONTROLLERS - with Radio Communication

201-16P6R4	16-station Pedestal, Electric Gold Surge	1	
201-24P6R4	24-station Pedestal, Electric Gold Surge	1	
201-32P6R4	32-station Pedestal, Electric Gold Surge	1	
201-40P6R4	40-station Pedestal, Electric Gold Surge	1	
201-48P6R4	48-station Pedestal, Electric Gold Surge	1	
201-56P6R4	56-station Pedestal, Electric Gold Surge	1	
201-64P6R4	64-station Pedestal, Electric Gold Surge	1	

# Network LTC® Plus Control System

The Network LTC® Plus field satellite gives you extraordinary power and modular flexibility. With positive-locking ribbon cables and multi-layer boards, there's greater surge protection. And, with 16 programs and 64 stations, you'll see that Network LTC Plus is one powerful product.



### Electrical Specifications

- Input power (Network LTC Plus):
  - 115/230 V ac, 50/60 Hz
  - 0.183 amps @ 115 V ac, 60 Hz (no load)
  - 0.872 amps @ 115 V ac, 60 Hz (max load)
  - 0.100 amps @ 230 V ac, 50 Hz (no load)
  - 0.50 amps @ 230 V ac, 50 Hz (max load)
- Input power (Network LTC with Electric-hydraulic Converters):
  - 115/230 V ac, 50/60 Hz
  - 0.15 amps @ 115 V ac, 60 Hz (no load)
  - 1.09 amps @ 115 V ac, 60 Hz (max load)
  - 0.15 amps @ 230 V ac, 50 Hz (no load)
  - 0.59 amps @ 230 V ac, 50 Hz (max load)
- Output power:
  - 24 V ac
  - 3.15 amps (76 VA) total

### Features & Benefits

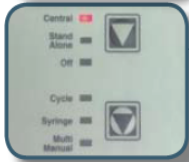
#### EXCLUSIVE TORO FLOWSAFE™

Protects flow-managed programs in the event of a central or wireline interruption. No single point of failure means programs will run even if the central computer is offline.



#### OPERATES AS A STAND-ALONE CONTROLLER

Great for new construction. Also operates under full management of SitePro®. Transition from stand-alone to central control after construction is complete.



#### INDEPENDENT PROGRAMS

Network LTC Plus offers 16 independent programs with up to eight running simultaneously. The Network LTC with Electric-hydraulic converters has 8 independent programs with up to 4 running simultaneously.



### Additional Features

- Standard or large-capacity terminal connections (accepts two 14-gauge wires)
- Standard or additional surge protection
- Manual On/Off station switches (optional)
- 14-day calendar or 1- to 29- day interval scheduling by program
- 0 to 3 repeats per program
- 0- to 59-minute soak time between repeats
- Up to 12 starts per program, per day
- Station run times from 1-minute to 8 hours and 59 minutes
- Global or independent program adjust at the satellite
- Percent adjust by program (10 to 250%)
- Syringe %, allows 10 to 99% operating adjustment.
- Up to 2 non-irrigation (switch) programs available with central software
- Non-volatile memory saves program data for up to 10 years without power
- Pump and Common control module with standard surge protection
- Manual operation by program (normal or syringe), independent station or multiple stations (up to 6)
- Patented Toro Hot Post for easy valve activation and identification
- Maximum lightning protection with EHC's

### Dimensions

- LTC Plus Plastic Cabinet:
  - 17" W x 40" H x 16" D
- LTC Plus Stainless Steel (painted):
  - 13" W x 35 3/4" H x 13" D
- LTC with Electric-hydraulic Converters:
  - 16" W x 39" H x 16" D

### Warranty

- 1 Year



LTC Plus to Network VP Upgrade Kit

Product	Description	Pkg	Each
<b>SITEPRO FOR LTC PLUS CENTRALS - Field Interface Sold Separate</b>			
SP-00-1-13	SitePro Synergy, Standard Computer, 1-year NS	1	
SP-01-1-03	Standard Computer, 1-year NSN for Network LTC	1	
SP-04-1-03	Premium Computer, 1-year NSN for Network LTC	1	
<b>FIELD INTERFACE UNITS</b>			
FIU-2010	Field Interface Unit w/1 Wireline	1	
FIU-2011R	Field Interface Unit w/1 Wireline and 1 Radio Lin (Radio included)	1	
<b>OPTIONS:</b>			
102-0397	Field Interface Unit Sensor Kit (Optional)	1	
102-0767	Field Interface Unit Additional Surge Protection Kit	1	
118-0038	Satellite Upgrade Kit, Network LTC Plus to Networ (Includes Faceplate, Power Distribution Board and Cable)	1	

### NETWORK LTC PLUS CONTROLLERS - With Modem Communication

LTCP16P6M4	16-station Pedestal, Electric Gold Surge	1	
LTCP24P6M4	24-station Pedestal, Electric Gold Surge	1	
LTCP32P6M4	32-station Pedestal, Electric Gold Surge	1	
LTCP40P6M4	40-station Pedestal, Electric Gold Surge	1	
LTCP48P6M4	48-station Pedestal, Electric Gold Surge	1	
LTCP56P6M4	56-station Pedestal, Electric Gold Surge	1	
LTCP64P6M4	64-station Pedestal, Electric Gold Surge	1	

### NETWORK LTC PLUS CONTROLLERS - With Built in Radio Communication

LTCP16P6R4	16-station Pedestal, Electric Gold Surge	1	
LTCP24P6R4	24-station Pedestal, Electric Gold Surge	1	
LTCP32P6R4	32-station Pedestal, Electric Gold Surge	1	
LTCP40P6R4	40-station Pedestal, Electric Gold Surge	1	
LTCP48P6R4	48-station Pedestal, Electric Gold Surge	1	
LTCP56P6R4	56-station Pedestal, Electric Gold Surge	1	
LTCP64P6R4	64-station Pedestal, Electric Gold Surge	1	

Product	Description	Pkg	Each
<b>E-OSMAC BOARD EXCHANGE REPLACEMENT BOARDS</b>			
R102-0187	Radio Decoder Board (Narrow band)	1	
R102-2012	RDR Decoder board (Narrow band)	1	
R102-0320	Pump and Common board	1	
R102-2549	8-Station Output Board (replaces 102-0319)	1	
R102-0318	64-Station Distribution Board	1	
R89-9449-PF	Wide Band Decoder - For People Finder Central	1	
R89-9449-B5	Wide Band Decoder - For Base Station Central	1	
R89-9804	Surge Protection-Switches & gas pills- Gold Lev	1	
R89-9869	Earth Ground bus bar PCB	1	
R89-9894	24 VAC bus bar PCB	1	

### OSMAC BOARD EXCHANGE REPLACEMENT BOARDS

RNLN3485	Wide Band Radio Decoder Board (for RDR serie	1	
RNLN3491A	8-Station Output board	1	
R91-1303	External Surge board (8-station)	1	
R91-1305	External Pump/Common Surge Board	1	

**E-Series OSMAC® and OSMAC RDR Systems**

The E-Series OSMAC satellite is easy, economical and expandable. Easy to install, troubleshoot and maintain. Economical because it's priced right from the start and you buy only what you need, when you need it. Expandable to grow as your site conditions change. The OSMAC field satellites utilize paging technology to create one of the most convenient, dependable and flexible satellites on the market. Employing wireless communication, these satellites are great for retrofit projects.



**Dimensions**

- Plastic Cabinet:  
17" W x 40" H x 16" D (41cm W x 99cm H x 41cm D)
- Metal Cabinet:  
13" W x 36" H x 13" D (33cm W x 91cm H x 33cm D)
- RDR Large pedestal:  
16" W x 45 1/2" H x 16" D  
(41cm W x 115.5cm H x 41cm D)

**Warranty**

- 1 Year

**Additional Features-OSMAC RDR**

- Hydraulic or electric models available
- Runs up to 16 stations simultaneously (from the central or by remote control)
- Hand-held radio
- Multi-function radio allows control and voice transmissions from the same unit
- Programmable syringe time from 30 seconds to 128 minutes in 30-second intervals.
- Optional relay card available
- Pre-wired satellite pedestal models available without RDR control unit for upgrading existing OSMAC systems

**Electrical Specifications**

- Input power: 120/240 V ac, 50/60 Hz
- E-Series OSMAC
  - 0.20 amps, 110-120 V ac, 60 Hz (no load)
  - 0.96 amps, 110-120 V ac, 60 Hz (max load)
  - 0.10 amps, 220-240 V ac, 50/60 Hz (no load)
  - 0.47 amps, 220-240 V ac, 50/60 Hz (max load)
- RDR OSMAC
  - 0.17 amps @ 115 V ac, 60 Hz (no load)
  - 0.76 amps @ 115 V ac, 60 Hz (max load)
  - 0.09 amps @ 230 V ac, 50 Hz (no load)
  - 0.41 amps @ 230 V ac, 50 Hz (max load)
- Station output power: 24 V ac; 3.0 amps (72 VA) total
- UL and CE approved

**Optional Accessories**

- Wide-band frequency modules (N1551XX) for E-Series OSMAC or RDR
- Low-voltage Retrofit Kit – (RDR0160LVNO) for OSMAC RDR

**Additional Features-E-Series OSMAC**

- Synthesized decoder modules that can be reprogrammed in the field - new frequency models can store up to 4 pre-programmed frequencies to transition from construction to permanent frequencies (narrow band)
- Stainless steel (painted) and bi-wall plastic cabinet configurations
- Five terminal strip options available
- Colored LED Indicators to confirm 24, 9-, and 5-volt power to various boards within the cabinet
- LED's for each station output
- Simple self-testing by sliding a switch - more than eight separate functions can be verified.
- Internal antenna allows for smaller profile cabinet
- Uses automotive fuses
- Patented Hot Post for each eight-station module

Product	Description	Pkg	Each
<b>SITEPRO FOR OSMAC CENTRALS - Includes Narrow Band Base Station</b>			
SP-00-1-11-NB	Synergy, Standard Computer, 1-year NSN, E-Series	1	
SP-01-1-01-NB	Standard Computer, 1-year NSN for E-Series OSMAC	1	
SP-04-1-01-NB	Premium Computer, 1-year NSN for E-Series OSMAC	1	

**E-OSMAC CONTROLLERS - Narrow Band Radio Included**

E-16P6ANM4	16-station Pedestal, Electric Gold Surge	1	
E-24P6ANM4	24-station Pedestal, Electric Gold Surge	1	
E-32P6ANM4	32-station Pedestal, Electric Gold Surge	1	
E-40P6ANM4	40-station Pedestal, Electric Gold Surge	1	
E-48P6ANM4	48-station Pedestal, Electric Gold Surge	1	
E-56P6ANM4	56-station Pedestal, Electric Gold Surge	1	
E-64P6ANM4	64-station Pedestal, Electric Gold Surge	1	

**E-OSMAC CONTROLLERS - Wide Band - Less Frequency Module**

E-16P6APM4	16-station Pedestal, Electric Gold Surge	1	
E-24P6APM4	24-station Pedestal, Electric Gold Surge	1	
E-32P6APM4	32-station Pedestal, Electric Gold Surge	1	
E-40P6APM4	40-station Pedestal, Electric Gold Surge	1	
E-48P6APM4	48-station Pedestal, Electric Gold Surge	1	
E-56P6APM4	56-station Pedestal, Electric Gold Surge	1	
E-64P6APM4	64-station Pedestal, Electric Gold Surge	1	

**WIDE BAND FREQUENCY MODULES (partial listing)**

N1551-1	Frequency - 467.8625 Mhz	1	
N1551-2	Frequency - 467.8125 Mhz	1	
N1551-3	Frequency - 467.8375 Mhz	1	
N1551-4	Frequency - 467.8875 Mhz	1	
N1551-5	Frequency - 467.9125 Mhz	1	
N1551-6	Frequency - 468.3125 Mhz	1	

**NARROW BAND FREQUENCY MODULES (partial listing)**

N1551-10	Frequency - 457.525 Mhz	1	
N1551-11	Frequency - 457.550 Mhz	1	
N1551-12	Frequency - 457.575 Mhz	1	
N1551-13	Frequency - 457.600 Mhz	1	
N1551-14	Frequency - 467.750 Mhz	1	
N1551-15	Frequency - 467.775 Mhz	1	

Product	Description	Pkg	Each
<b>E-OSMAC BOARD EXCHANGE REPLACEMENT BOARDS</b>			
R102-0187	Radio Decoder Board (Narrow band)	1	
R102-2012	RDR Decoder board (Narrow band)	1	
R102-0320	Pump and Common board	1	
R102-2549	8-Station Output Board (replaces 102-0319)	1	
R102-0318	64-Station Distribution Board	1	
R89-9449-PF	Wide Band Decoder - For People Finder Central	1	
R89-9449-B5	Wide Band Decoder - For Base Station Central	1	
R89-9804	Surge Protection-Switches & gas pills- Gold Lev	1	
R89-9869	Earth Ground bus bar PCB	1	
R89-9894	24 VAC bus bar PCB	1	

**OSMAC BOARD EXCHANGE REPLACEMENT BOARDS**

RNLN3485	Wide Band Radio Decoder Board (for RDR serie	1	
RNLN3491A	8-Station Output board	1	
R91-1303	External Surge board (8-station)	1	
R91-1305	External Pump/Common Surge Board	1	

**SMART OSMAC ACCESSORIES**

102-2915	Smart OSMAC EPROM—E-Series Compatible	1	
102-1202	N-Band Decoder Mod for Plastic Cabinet	1	
102-1203	N-Band Decoder Mod for Metal Cabinet	1	

**ACCESSORIES**

102-1204	Extl Antenna Cable for Plastic or Metal Cabinet	1	
102-2605	Antenna Kit, OSX 1/4 Wave, OSMAC	1	
102-3126	Osmac RDR Dome Antenna kit	1	
RAE4000ARG	Dome Antennae	1	
TDE7710A	RDR Antennae	1	
102-0655	External Antenna w/BNC Conn - Plastic Cabinet	1	
102-0656	Antenna Interface (Required for 102-0656 above	1	